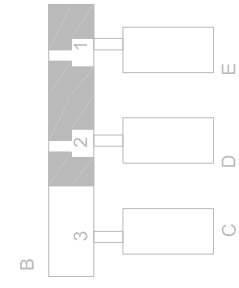


Diagram illustrating a three-layered system (B) with three distinct sections (1, 2, 3) and corresponding components (E, D, C).

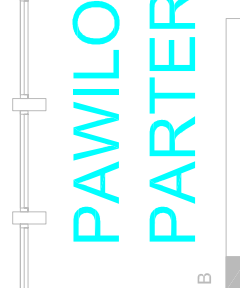


- 
- The diagram shows a vertical stack of three rectangular components labeled C, D, and E. Component C is at the bottom, D is in the middle, and E is at the top. They are connected by a central vertical line. To the left of the components is a vertical bar with three segments, each labeled with a number: 1 (top), 2 (middle), and 3 (bottom). The bar has a shaded gray section at the top and a white section at the bottom. The label 'B' is positioned to the left of the bar.

The diagram shows a vertical stack of three rectangular components labeled C, D, and E. Component C is at the bottom, D is in the middle, and E is at the top. They are connected by a central vertical line. To the left of the components is a vertical bar with three segments, each labeled with a number: 1 (top), 2 (middle), and 3 (bottom). The bar has a shaded gray section at the top and a white section at the bottom. The label 'B' is positioned to the left of the bar.

- 
- The diagram shows a vertical stack of three rectangular components labeled C, D, and E. Component C is at the bottom, D is in the middle, and E is at the top. They are connected by a central vertical line. To the left of the components is a vertical bar with three segments, each labeled with a number: 1 (top), 2 (middle), and 3 (bottom). The bar has a shaded gray section at the top and a white section at the bottom. The label 'B' is positioned to the left of the bar.

PAWIŁO PARTER



- PAWIŁO PARTER

PAWIŁO PARTER